







Trail Information

Length	4.36 Miles
Duration: Bike	1.0 Hours
Hike	1.5 Hours
Elevation Gain/Loss	+811/-808 Ft.
Trail Head	Second Gulch

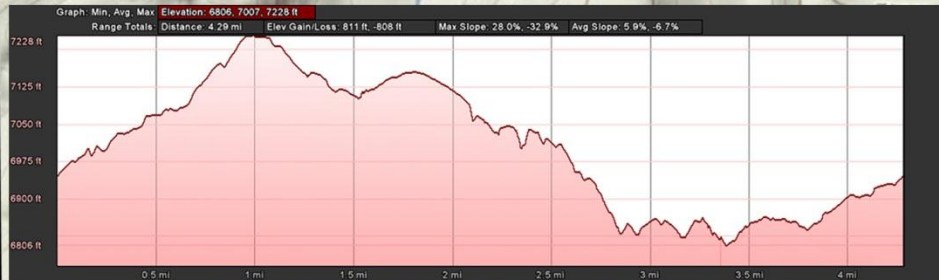
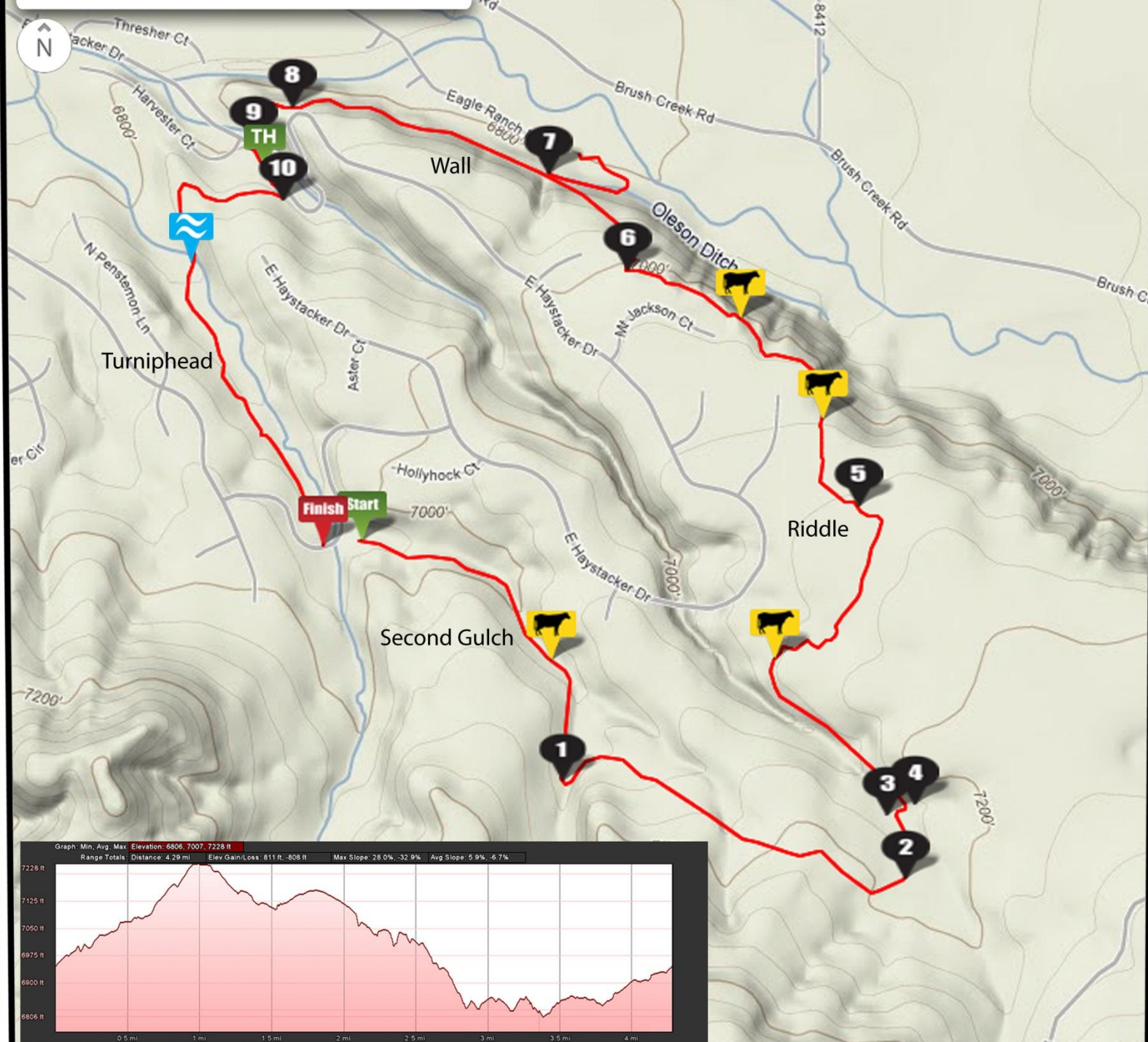
Directions

- CATTLE GRATE 0.36
- 1 Turn left at intersection 0.56
- 2 Turn left at intersection 1.16
- 3 Turn right at intersection 1.26
- 4 Make immediate left 1.28
- CATTLE GRATE 1.65
- 5 Cross straight over road 1.99
- CATTLE GRATE 2.15
- CATTLE GRATE 2.42
- 6 Turn right at intersection 2.61
- 7 Continue straight 2.89
- 8 Turn right at intersection 3.30
- 9 Cross road and continue on single track 3.47
- 10 Turn right onto Turniphead 3.58
- Creek Crossing, bridge provided 3.89
- END Trail ends at Arroyo Drive 4.36

Map Legend

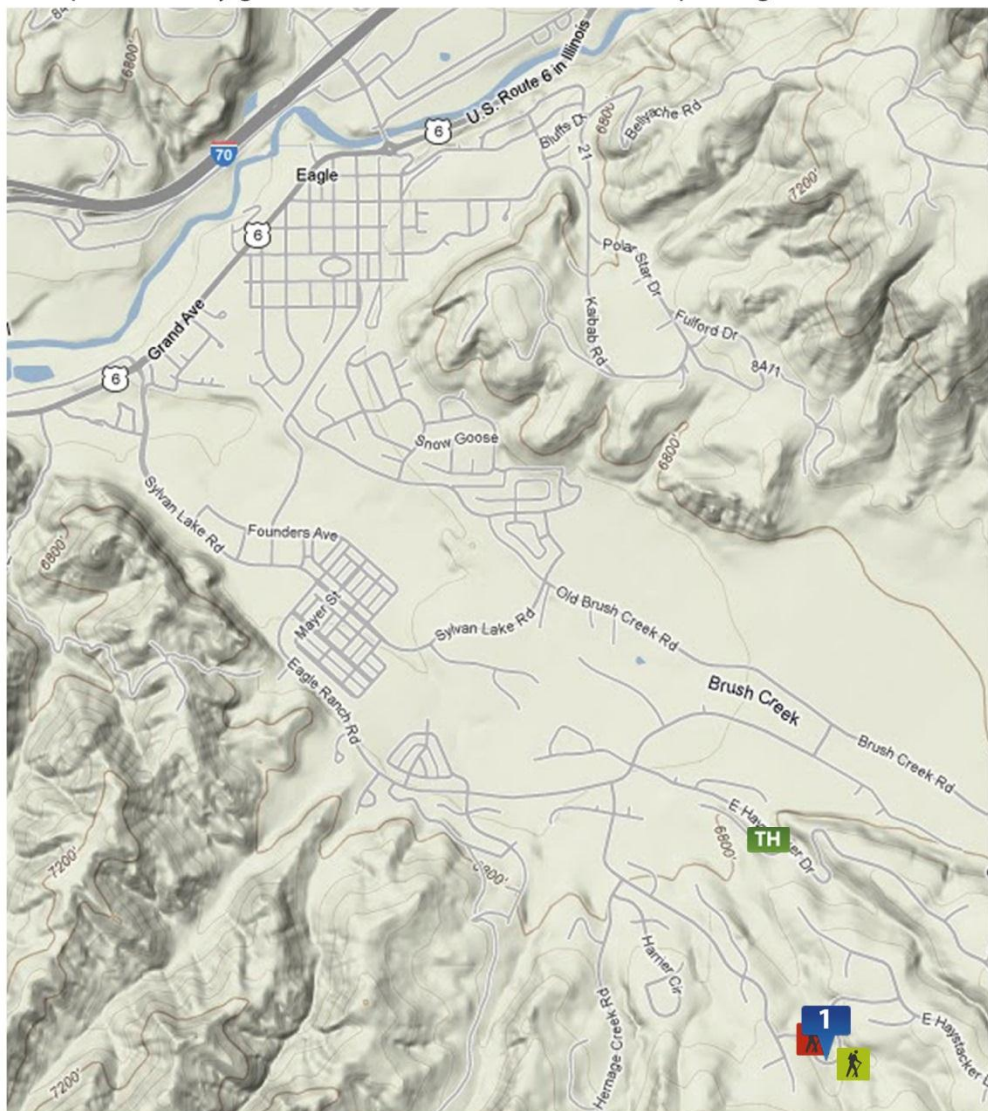
-  Intersection
-  Trail Start
-  Trail Finish
-  Cattle Grate
-  Creek Crossing
-  Haystacker Trail Head

Second Gulch-Riddle-Wall-Turniphead





This is a great trail to get to know hiking in Eagle. The small loop offers great views of Brush Creek and up to New York Mountain. The climb up to the first mile marker is somewhat steep. Riddle offers the first bit of semi-technical trail. The trail is rocky single track with a small amount of exposure. This is the section with the best views, especially late afternoon to early evening. Wall has some climbs, but nothing too daunting. A steep switchback brings the hiker down to Haystacker Drive, and after crossing the road begins a short climb. Hiking up Turniphead is very gradual and returns the hiker to the parking area.



1 Arroyo Drive Parking

0190 Arroyo Drive

Take I-70 Exit 147. Turn left on Eby Creek Rd. At the traffic circle, take first exit onto Grand Ave. At the traffic circle, take the third exit onto Sylvan Lake Rd. Turn right on Eagle Ranch Rd. Turn right on Fourth of July Rd. Turn left on Arroyo Dr. to the parking lot and trailhead.

[Trailer Parking] trail adjacent



To Second Gulch Trail Head

Trail starts off of paved recreation path just east of parking area



To Turniphead Trail Head

Cross Arroyo Drive to the north of the parking area



Haystacker Trail Head