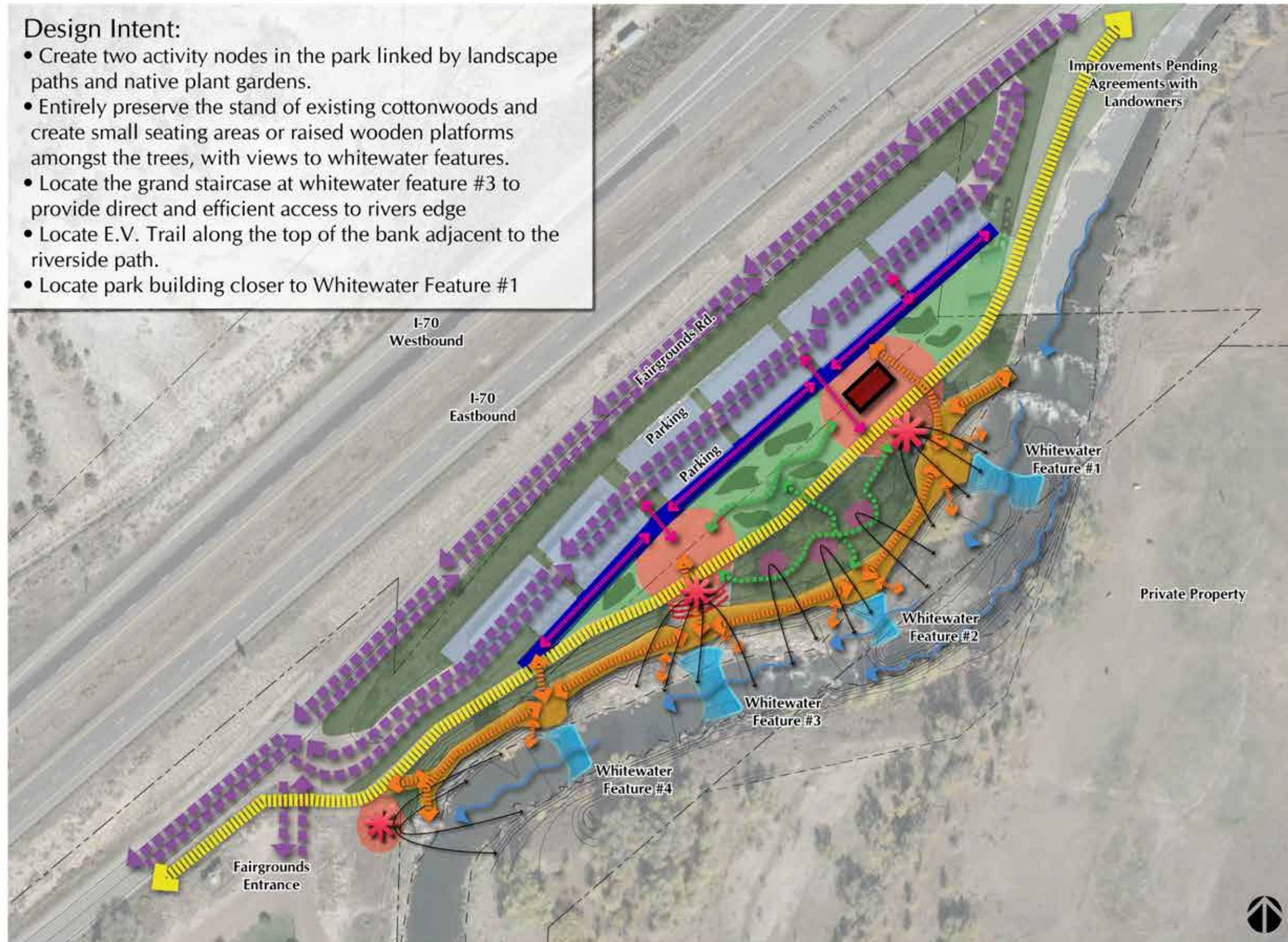


**Design Intent:**

- Create two activity nodes in the park linked by landscape paths and native plant gardens.
- Entirely preserve the stand of existing cottonwoods and create small seating areas or raised wooden platforms amongst the trees, with views to whitewater features.
- Locate the grand staircase at whitewater feature #3 to provide direct and efficient access to rivers edge
- Locate E.V. Trail along the top of the bank adjacent to the riverside path.
- Locate park building closer to Whitewater Feature #1

**LEGEND**

- Activity Space and River Events Area
- Park Support Building (Restrooms, Changing Area, Showers, and Storage)
- Whitewater Feature
- Grand Staircase
- River Overlooks
- Boat / Gear Staging Area (Potential Trailer Parking and Vendor Tents)
- Parking Area
- Riverside Path and Whitewater Viewing Area
- Landscape Area and Overflow Event Space
- Native Planting Area
- Vehicular Circulation
- Eagle Valley Trail Alignment (10' Path)
- River User Circulation and Boating Access Points
- Upland Park Pedestrian Circulation
- Discovery Trail
- Views to River



February 23, 2017

**River Park Conceptual Bubble Diagram  
Option #1**

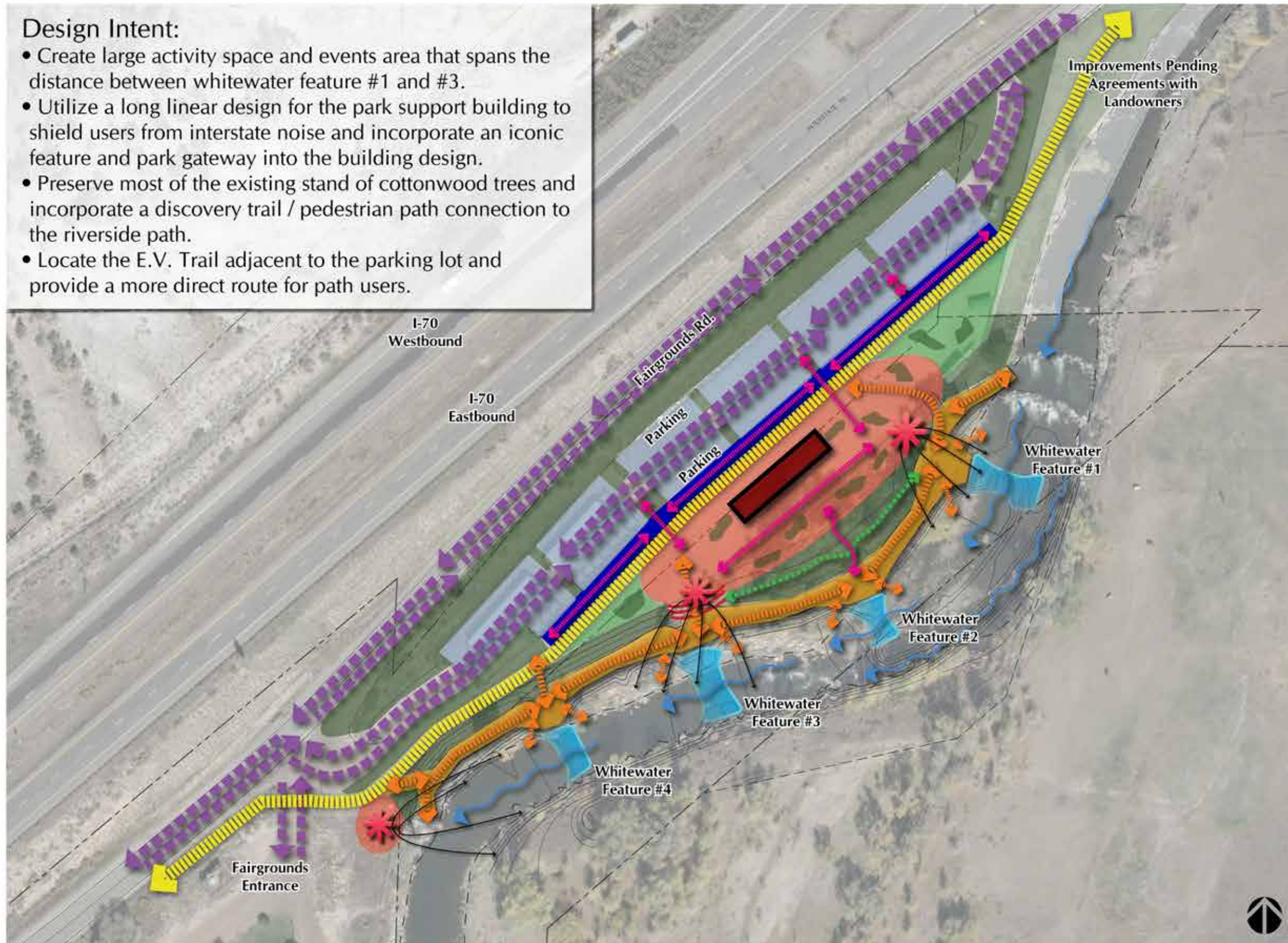


**Design Intent:**

- Create large activity space and events area that spans the distance between whitewater feature #1 and #3.
- Utilize a long linear design for the park support building to shield users from interstate noise and incorporate an iconic feature and park gateway into the building design.
- Preserve most of the existing stand of cottonwood trees and incorporate a discovery trail / pedestrian path connection to the riverside path.
- Locate the E.V. Trail adjacent to the parking lot and provide a more direct route for path users.

**LEGEND**

- Activity Space and River Events Area
- Park Support Building (Restrooms, Changing Area, Showers, and Storage)
- Whitewater Feature
- Grand Staircase
- River Overlooks
- Boat / Gear Staging Area (Potential Trailer Parking and Vendor Tents)
- Parking Area
- Riverside Path and Whitewater Viewing Area
- Landscape Area and Overflow Event Space
- Native Planting Area
- Vehicular Circulation
- Eagle Valley Trail Alignment (10' Path)
- River User Circulation and Boating Access Points
- Upland Park Pedestrian Circulation
- Discovery Trail
- Views to River

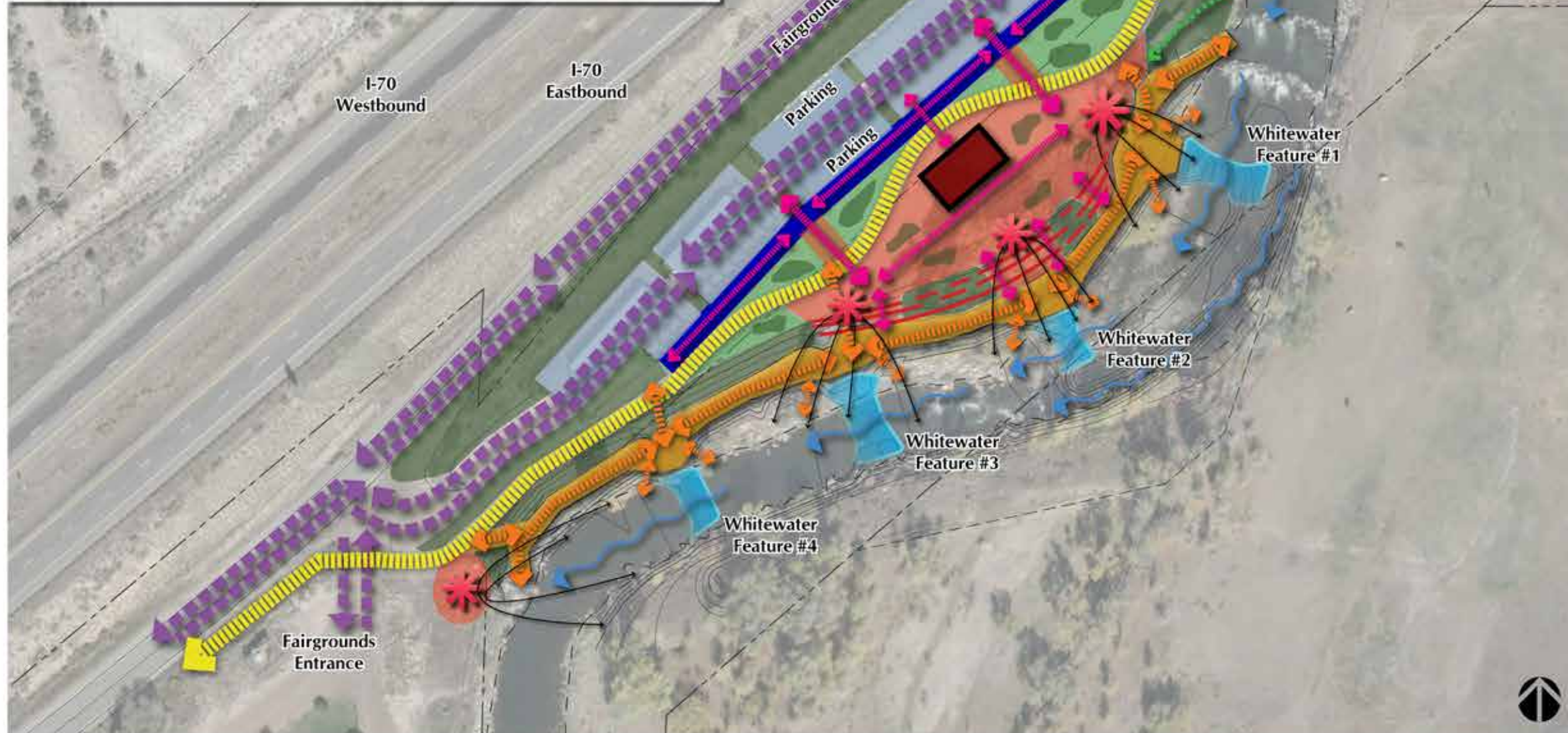


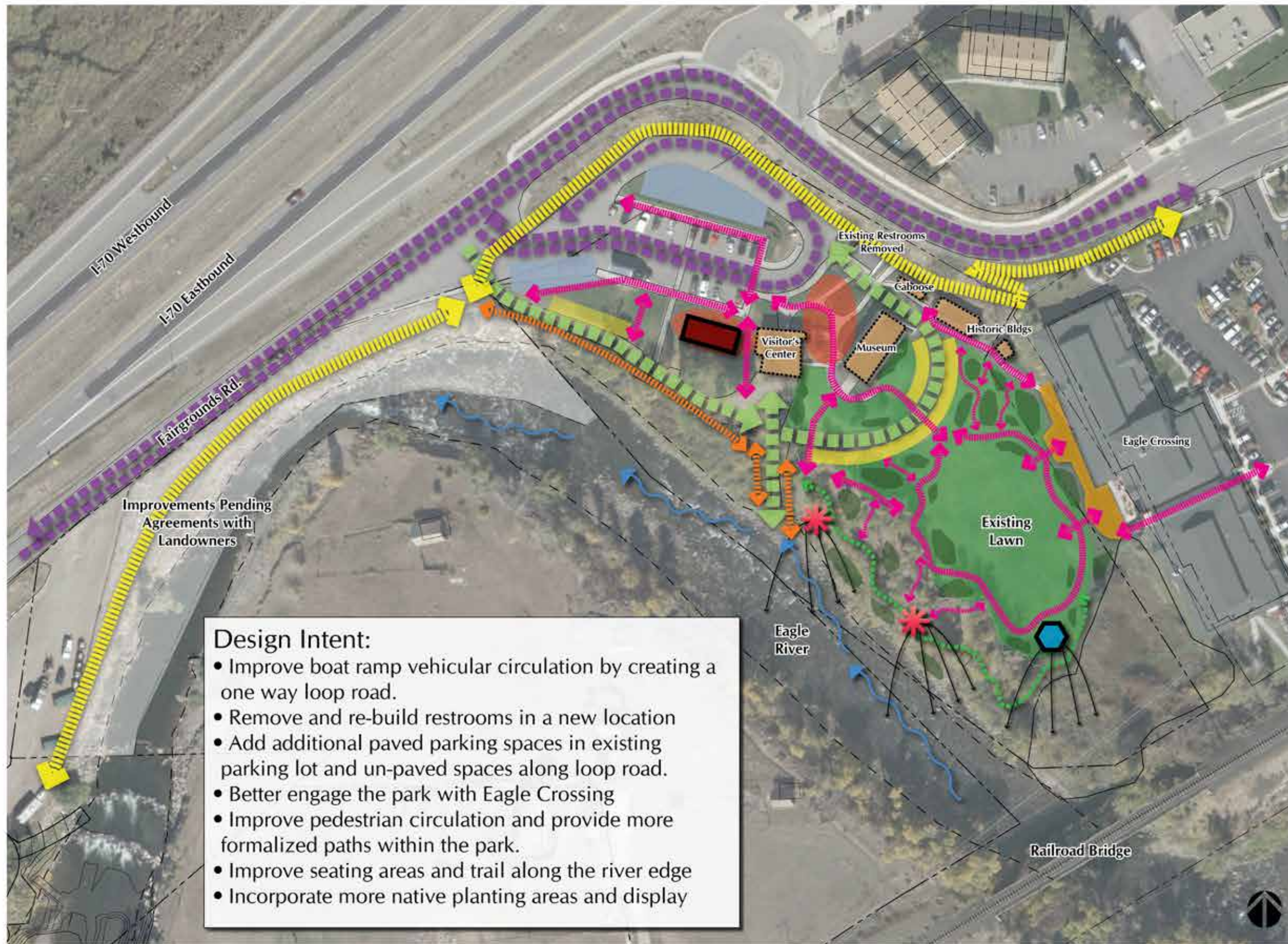
**Design Intent:**

- Create an upland activity node for the park that is extremely well connected to the riverside path area and provides the greatest amount of seating and viewing opportunities along the whitewater park.
- Extend the grand staircase from feature #1 to feature #3 in a way that it integrates with the existing cottonwood trees and provides a third river overlook at feature #2.
- Meander the E.V. Trail to slow users down through the park and better incorporate it into the park space.
- Use berms and planting for interstate noise attenuation between parking and activity space.

**LEGEND**

- Activity Space and River Events Area
- Park Support Building (Restrooms, Changing Area, Showers, and Storage)
- Whitewater Feature
- Grand Staircase
- River Overlooks
- Boat / Gear Staging Area (Potential Trailer Parking and Vendor Tents)
- Parking Area
- Riverside Path and Whitewater Viewing Area
- Landscape Area and Overflow Event Space
- Native Planting Area
- Vehicular Circulation
- Eagle Valley Trail Alignment (10' Path)
- River User Circulation and Boating Access Points
- Upland Park Pedestrian Circulation
- Discovery Trail
- Views to River

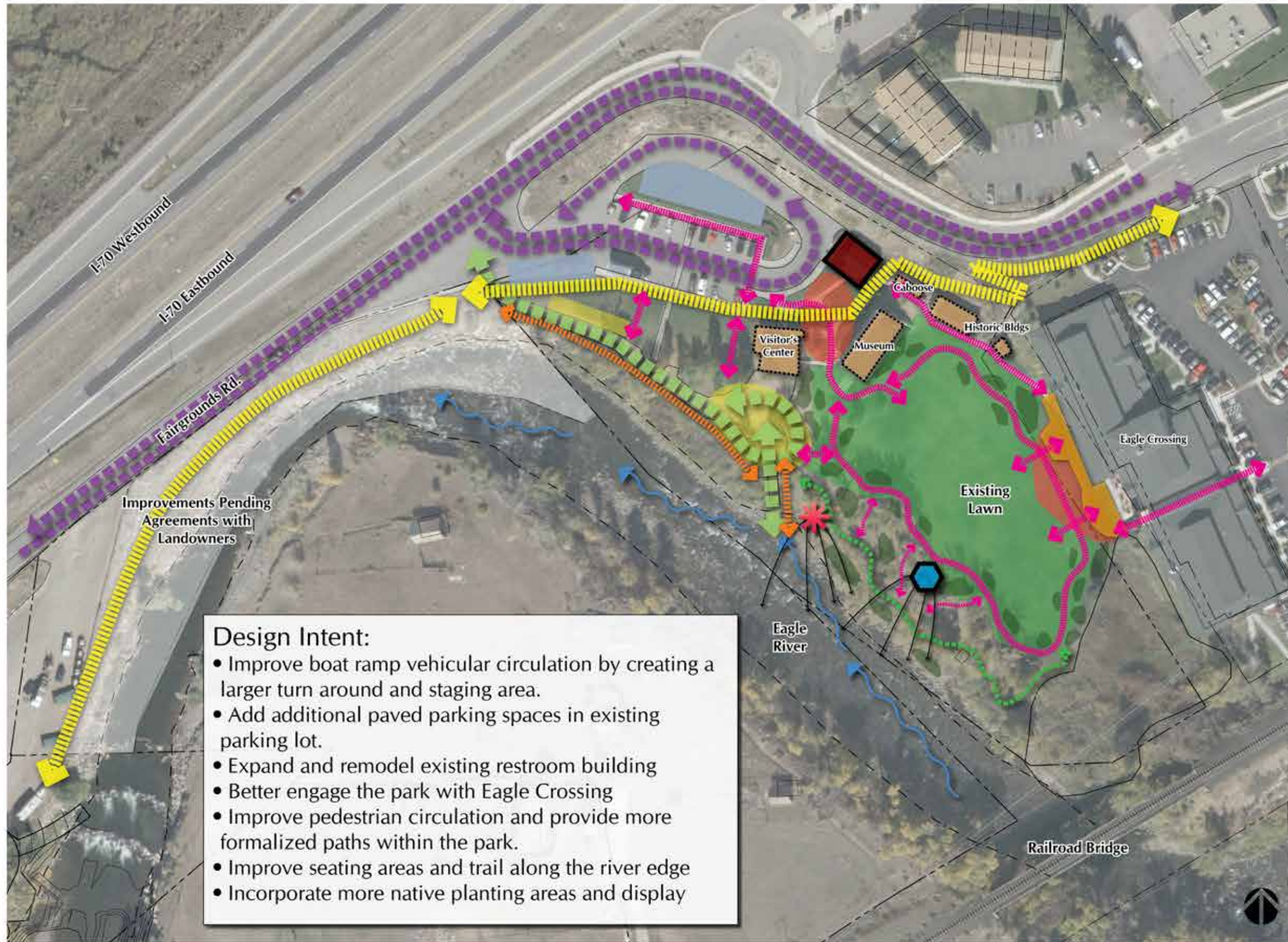




**Design Intent:**

- Improve boat ramp vehicular circulation by creating a one way loop road.
- Remove and re-build restrooms in a new location
- Add additional paved parking spaces in existing parking lot and un-paved spaces along loop road.
- Better engage the park with Eagle Crossing
- Improve pedestrian circulation and provide more formalized paths within the park.
- Improve seating areas and trail along the river edge
- Incorporate more native planting areas and display

-  Potential Paved Plaza Area
-  New Restroom Building
-  Potential Small Pavilion or Stage
-  Existing Buildings
-  River Overlook
-  Potential Un-Paved Parking and Temporary Event Vendor Areas
-  Potential Paved Parking Areas
-  Commercial Deck or Building Expansion
-  Landscape Area and Event Space
-  Native Planting and Display Gardens
-  Boat Ramp Access Road (Un-paved / One Way)
-  Vehicular Circulation
-  Eagle Valley Trail Alignment (10' Path)
-  River User Circulation and Boating Access Points
-  Park Pedestrian Circulation
-  Discovery Trail
-  Views to River



- Potential Paved Plaza Area
- Expanded and Re-modeled Restrooms
- Potential Small Pavilion or Stage
- Existing Buildings
- River Overlook
- Expanded Boat Ramp Turn Around and Staging Area
- Potential Paved Parking Areas
- Potential Commercial Deck or Building Expansion
- Landscape Area and Event Space
- Native Planting and Display Gardens
- Boat Ramp Access Road (Un-paved / One Lane)
- Vehicular Circulation
- Eagle Valley Trail Alignment (10' Path)
- River User Circulation and Boating Access Points
- Park Pedestrian Circulation
- Discovery Trail
- Views to River

**Design Intent:**

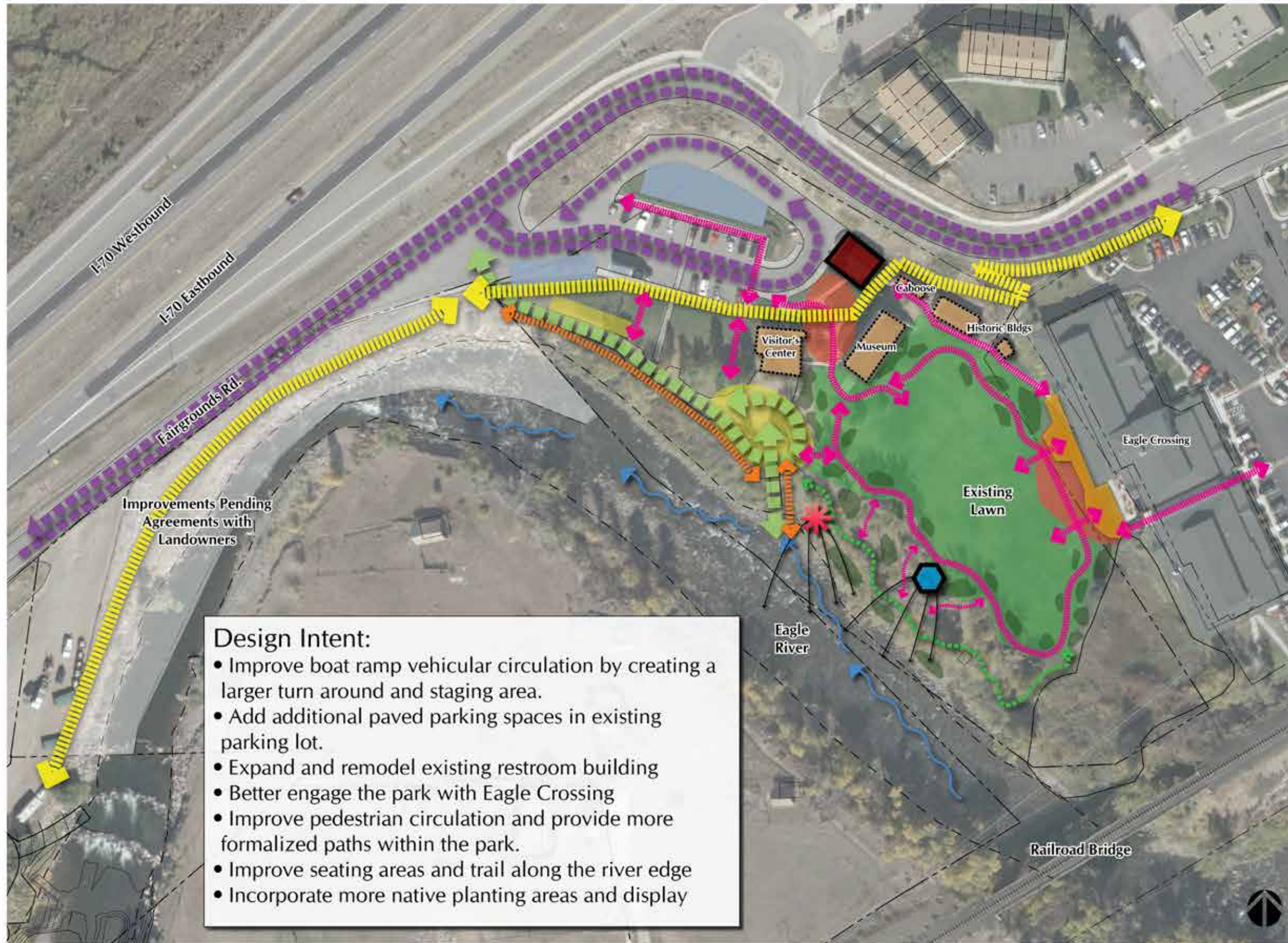
- Improve boat ramp vehicular circulation by creating a larger turn around and staging area.
- Add additional paved parking spaces in existing parking lot.
- Expand and remodel existing restroom building
- Better engage the park with Eagle Crossing
- Improve pedestrian circulation and provide more formalized paths within the park.
- Improve seating areas and trail along the river edge
- Incorporate more native planting areas and display



February 23, 2017

## Chambers Park Conceptual Bubble Diagram Option #2





- Potential Paved Plaza Area
- Expanded and Re-modeled Restrooms
- Potential Small Pavilion or Stage
- Existing Buildings
- River Overlook
- Expanded Boat Ramp Turn Around and Staging Area
- Potential Paved Parking Areas
- Potential Commercial Deck or Building Expansion
- Landscape Area and Event Space
- Native Planting and Display Gardens
- Boat Ramp Access Road (Un-paved / One Lane)
- Vehicular Circulation
- Eagle Valley Trail Alignment (10' Path)
- River User Circulation and Boating Access Points
- Park Pedestrian Circulation
- Discovery Trail
- Views to River

**Design Intent:**

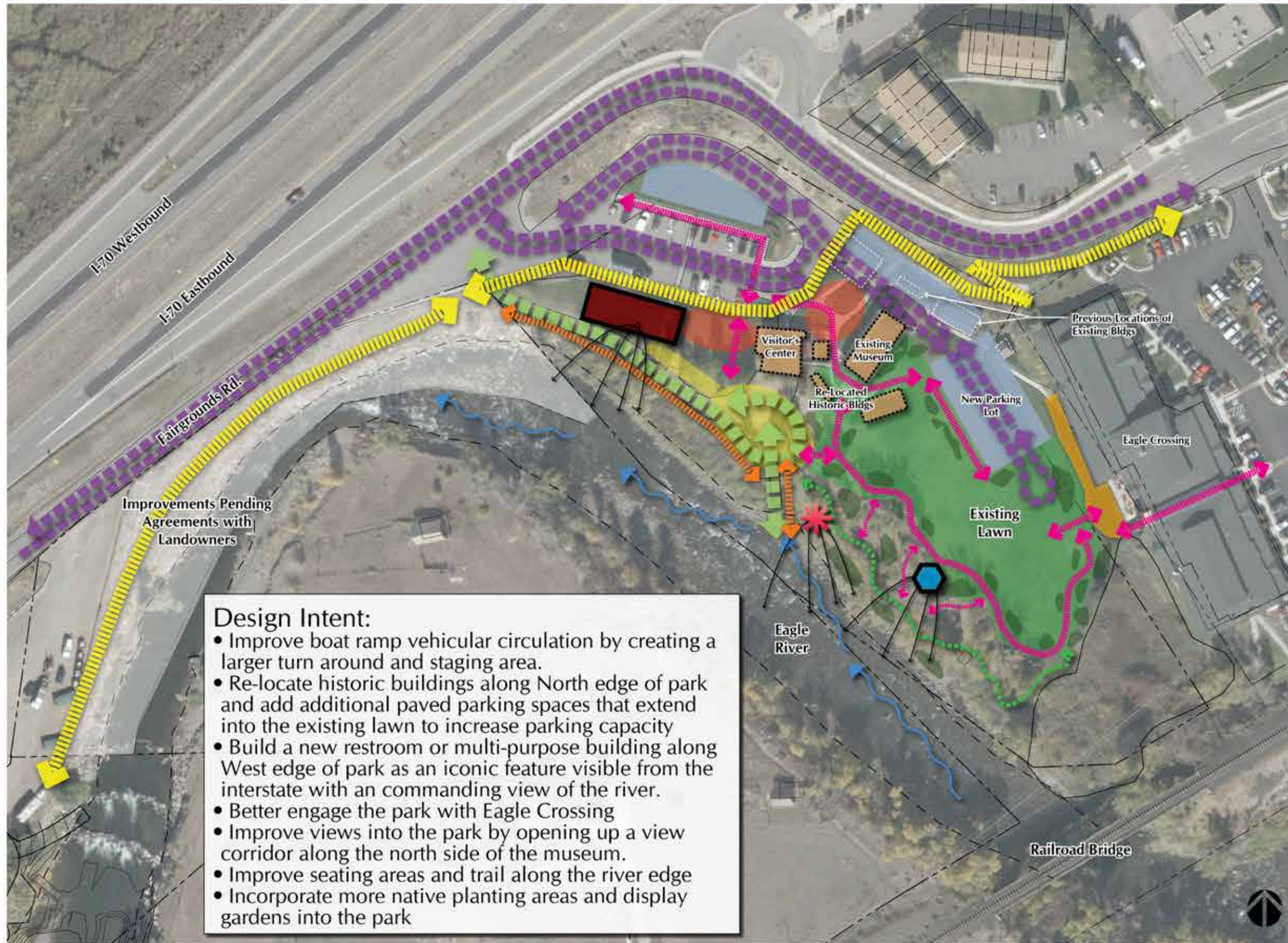
- Improve boat ramp vehicular circulation by creating a larger turn around and staging area.
- Add additional paved parking spaces in existing parking lot.
- Expand and remodel existing restroom building
- Better engage the park with Eagle Crossing
- Improve pedestrian circulation and provide more formalized paths within the park.
- Improve seating areas and trail along the river edge
- Incorporate more native planting areas and display



February 23, 2017

**Chambers Park Conceptual Bubble Diagram  
Option #2**





**Design Intent:**

- Improve boat ramp vehicular circulation by creating a larger turn around and staging area.
- Re-locate historic buildings along North edge of park and add additional paved parking spaces that extend into the existing lawn to increase parking capacity
- Build a new restroom or multi-purpose building along West edge of park as an iconic feature visible from the interstate with an commanding view of the river.
- Better engage the park with Eagle Crossing
- Improve views into the park by opening up a view corridor along the north side of the museum.
- Improve seating areas and trail along the river edge
- Incorporate more native planting areas and display gardens into the park



February 23, 2017

**Chambers Park Conceptual Bubble Diagram  
Option #3**

